



Madison, Wisconsin

CITY OF MADISON

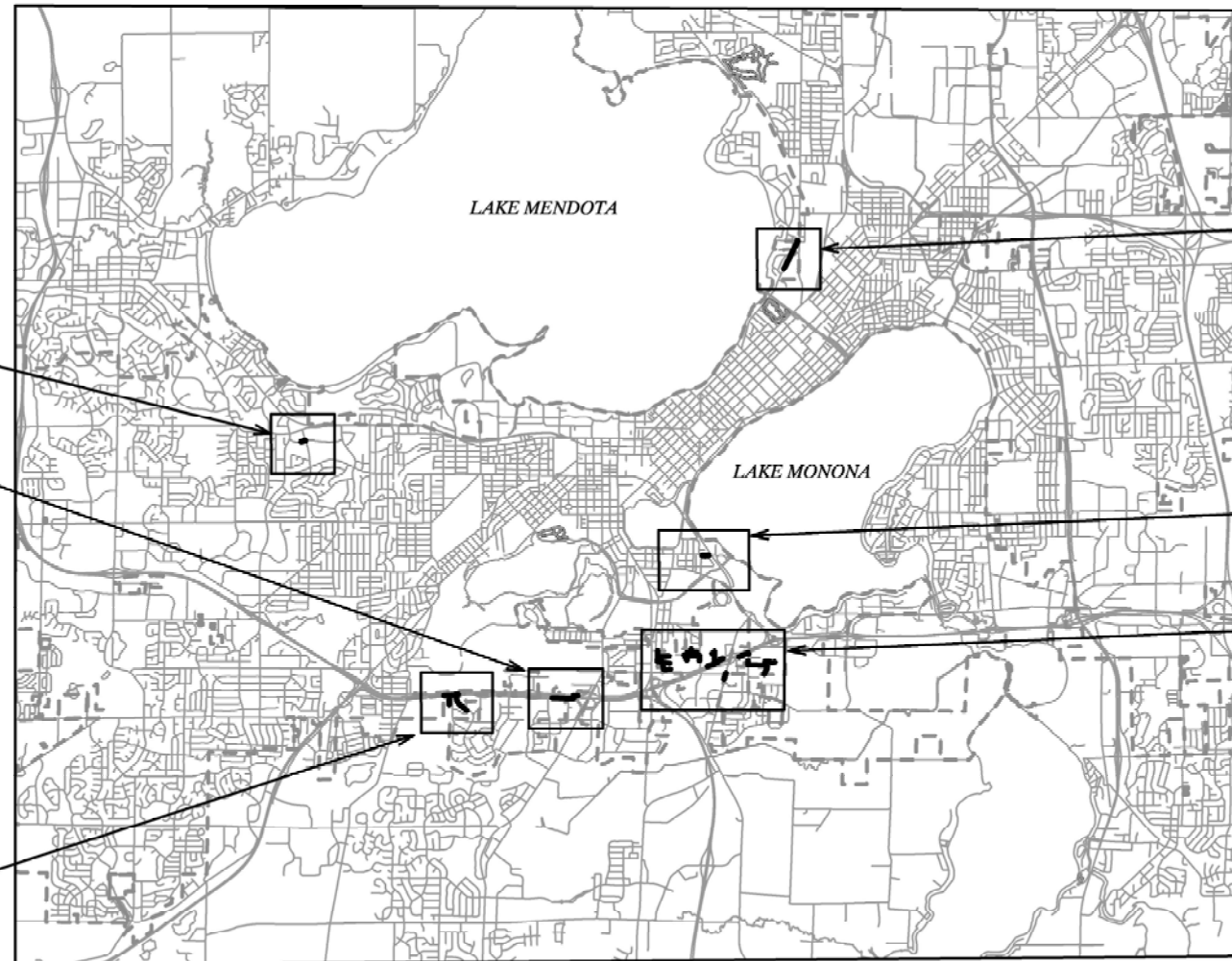
CITY ENGINEERING DIVISION

DEPARTMENT OF PUBLIC WORKS

PLAN OF PROPOSED IMPROVEMENT

CIPP UV LINING REHABILITATION OF SANITARY SEWERS PHASE 2 - 2023

CITY PROJECT NO. 14487
CONTRACT NO. 9335



INDEX OF SHEETS

TITLE	1	TITLE
SHEET NO. D1-D2		DETAILED LINING LIST
SHEET NO. P1-P13		UTILITY PLANS
Sheet NO. P14		Added with Revision I

SHEET NO P-15 ADDED WITH REVISION II

PUBLIC IMPROVEMENT PROJECT
APPROVED

JULY 18, 2023

BY THE COMMON COUNCIL
OF MADISON, WISCONSIN

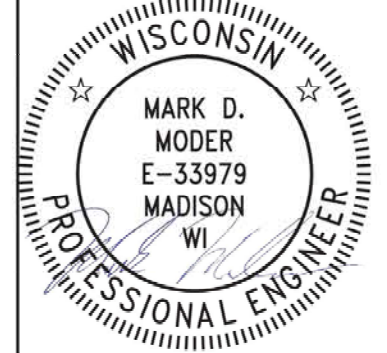
PUBLIC IMPROVEMENT DESIGN
APPROVED BY:

Jul 20, 2023

City Engineer

Date

SANITARY SEWER
DESIGNED BY:



Jul 20, 2023

PLOT SCALE: 1 IN. = 1 FT. XREF

PLOT NAME: ---

REV. DATE: 7/19/2023 2:42 PM

ORIGINATOR: CITY_OF_MADISON



LOCATION	U.S. STRUCT.	D.S. STRUCT.	DIA (IN)	LENGTH (LF)	MATERIAL	LATERALS	OUTSIDE DROPS	SHEET
West Beltline Frontage Road	SAS4066-001	SAS4066-002	8	225	VP	1	0	P-1
West Beltline Frontage Road	SAS4066-002	SAS4066-004	8	61	VP	0	0	P-1
West Beltline Frontage Road	SAS4066-004	SAS4066-003	8	164	VP	0	0	P-1
West Beltline Frontage Road	SAS4066-003	SAS4166-001	8	218	AC	0	0	P-1
West Beltline Frontage Road	SAS4166-001	SAS4166-002	8	107	AC	0	0	P-1
River Bend Road	SAS4067-006	SAS4066-008	8	177	VP	0	1	P-1
River Bend Road	SAS4066-008	SAS4066-004	8	350	VP	0	0	P-1
Grandview Boulevard	SAS4167-012	SAS4167-013	8	163	VP	1	0	P-1
Grandview Boulevard	SAS4167-013	SAS4167-014	8	316	VP	3	0	P-1
Grandview Boulevard	SAS4167-014	SAS4167-015	8	116	VP	1	0	P-1
Grandview Boulevard	SAS4167-015	SAS4166-011	8	125	VP	1	0	P-1
Grandview Boulevard	SAS4166-011	SAS4166-009	8	150	VP	1	0	P-1
Grandview Boulevard	SAS4166-009	SAS4166-001	8	220	VP	0	0	P-1
West Beltline Frontage Road	SAS4466-005	SAS4566-012	8	250	VP	0	0	P-2
West Beltline Frontage Road	SAS4566-012	SAS4566-009	8	250	VP	1	0	P-2
West Beltline Frontage Road	SAS4566-009	SAS4566-010	8	402	VP	2	0	P-2
West Beltline Frontage Road	SAS4566-010	SAS4566-011	8	260	VP	1	0	P-2
West Beltline Frontage Road	SAS4566-011	SAS4566-004	8	180	VP/CI	0	0	P-2
West Beltline Frontage Road	SAS4566-004	SAS4566-003	8	229	VP	0	0	P-2
Badger Parkway (PRIVATE ROAD)	SAS4964-008	SAS4964-007	8	300	VP	3	1	P-3
Badger Parkway (PRIVATE ROAD)	SAS4964-007	SAS4964-006	8	55	VP	0	0	P-3
Badger Parkway (PRIVATE ROAD)	SAS4964-006	SAS4964-005	8	166	VP	2	0	P-3
Badger Parkway (PRIVATE ROAD)	SAS4964-005	SAS4964-002	8	230	VP	2	1	P-3
Skyview Plaza (PRIVATE ROAD)	SAS4964-004	SAS4964-003	8	228	VP	3	0	P-3
Skyview Plaza (PRIVATE ROAD)	SAS4964-003	SAS4964-002	8	125	VP	1	0	P-3
Skyview Plaza (PRIVATE ROAD)	SAS4964-002	SAS4964-001	8	313	VP	0	1	P-3
Woodview Court (PRIVATE ROAD)	SAS4964-001	SAS4963-018	12	325	VP	0	0	P-4
Woodview Court (PRIVATE ROAD)	SAS4963-020	SAS4963-019	8	400	VP	5	0	P-4
Woodview Court (PRIVATE ROAD)	SAS4963-019	SAS4963-018	8	224	VP	2	0	P-4
Woodview Court (PRIVATE ROAD)	SAS4963-018	SAS4963-010	12	245	VP	0	0	P-4
North Rusk Avenue	SAS5063-001	SAS5063-020	8	205	VP	4	1	P-5
Nygaard Street	SAS5063-028	SAS5063-027	8	219	VP	1	0	P-5
Nygaard Street	SAS5063-027	SAS5063-026	8	240	VP	2	0	P-5
Cliff Court/Nygaard Street Easement	SAS5064-004	SAS5064-002	8	134	VP	1	0	P-5
Cliff Court/Nygaard Street Easement	SAS5064-003	SAS5064-002	8	113	VP	1	0	P-5
Cliff Court/Nygaard Street Easement	SAS5064-002	SAS5063-019	8	131	VP	1	0	P-5
Nygaard Street	SAS5063-018	SAS5063-019	8	200	VP	0	0	P-5
Nygaard Street	SAS5063-019	SAS5063-026	8	185	VP	1	0	P-5
Nygaard Street/Sunny Meade Lane Easement	SAS5063-026	SAS5063-021	8	165	VP	0	1	P-5
Nygaard Street/Sunny Meade Lane Easement	SAS5063-020	SAS5063-021	8	218	VP	2	0	P-5
Nygaard Street/Sunny Meade Lane Easement	SAS5063-022	SAS5063-021	8	300	VP	4	0	P-5
Nygaard Street/Sunny Meade Lane Easement	SAS5063-021	SAS5063-029	8	175	VP	0	0	P-5

2

MARK	REVISION	DATE	BY
14487		7/14/2023 11:33 AM	

14487

D-1 DETAILED LINING LIST

CIPP UV LINING REHABILITATION OF SANITARY SEWERS PHASE 2 - 2023 MADISON, WI

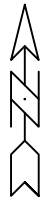
CONTRACT NO: 9335

F:\Encommon\Trenchless2023 MH2MHPHASE 2\CAD\14487 Plans.dwg

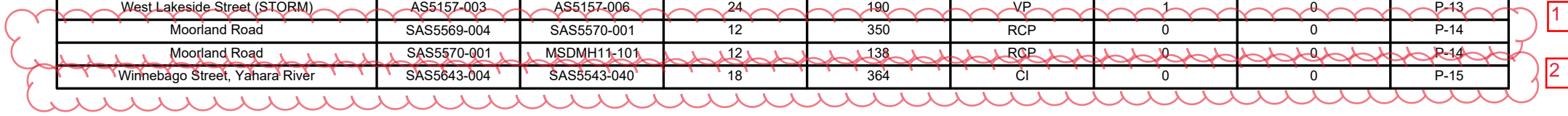


14487

D-1



LOCATION	U.S. STRUCT.	D.S. STRUCT.	DIA (IN)	LENGTH (LF)	MATERIAL	LATERALS	OUTSIDE DROPS	SHEET
South Beltline Court	SAS5163-003	SAS5163-004	8	128	VP	2	0	P-6
South Beltline Court	SAS5163-005	SAS5163-004	8	135	VP	0	0	P-6
South Beltline Court	SAS5163-004	SAS5163-002	8	187	VP	4	0	P-6
South Beltline Court	SAS5163-002	SAS5164-006	8	350	VP	1	0	P-6
East Rusk Avenue	SAS5164-005	SAS5164-006	8	400	VP	1	0	P-6
East Rusk Avenue	SAS5164-006	SAS5164-001	8	199	VP	0	0	P-6
East Rusk Avenue	SAS5164-001	SAS5164-002	8	71	VP	0	0	P-6
East Rusk Avenue	SAS5164-002	SAS5164-003	8	315	VP	1	0	P-6
Rimrock Road	SAS5265-003	SAS5265-001	10	275	CP	0	0	P-7
Rimrock Road	SAS5265-001	SAS5264-002	12	71	CP	0	0	P-7
Nob Hill Road	SAS5263-009	SAS5263-010	12	193	CP	1	0	P-8
Nob Hill Road	SAS5263-010	SAS5263-011	12	66	CP	0	0	P-8
Nob Hill Road	SAS5263-011	SAS5263-012	12	283	CP	0	0	P-8
Nob Hill Road	SAS5263-012	LSBADGER	12	53	CP/CI	0	0	P-8
Badger Lane	SAS5264-007	SAS5264-008	12	242	CP	2	0	P-8
Holtzman Road	SAS5264-008	SAS5364-001	12	329	CP	2	0	P-8
Holtzman Road	SAS5364-001	SAS5364-002	12	409	CP	3	0	P-8
Holtzman Road	SAS5364-002	SAS5364-003	12	181	CP	1	0	P-9
Holtzman Road Easement	SAS5464-001	SAS5364-009	8	145	VP	0	0	P-9
Holtzman Road Easement	SAS5364-009	SAS5364-008	8	202	VP	0	1	P-9
Holtzman Road Easement	SAS5364-008	SAS5364-006	8	175	VP	0	0	P-9
Holtzman Road Easement	SAS5364-006	SAS5364-007	8	111	VP	0	0	P-9
Holtzman Road Easement	SAS5364-007	SAS5364-003	8	109	VP	1	0	P-9
Holtzman Road Easement	SAS5364-003	SAS5364-004	12	142	CP	0	0	P-9
Holtzman Road Easement	SAS5364-004	SAS5364-005	12	127	CP	0	0	P-9
Holtzman Road Easement	SAS5364-005	MSDMH03-111	12	294	CP	0	0	P-9
Sherman Avenue	SAS5440-013	SAS5440-011	8	129	VP	0	0	P-10
Sherman Avenue	SAS5440-011	SAS5439-007	8	400	VP	6	0	P-10
Sherman Avenue	SAS5439-007	SAS5439-003	8	361	VP	6	0	P-10
Sherman Avenue	SAS5439-003	SAS5439-002	8	388	VP	5	0	P-11
Sheboygan Avenue	SAS3451-020	SAS3450-020	8	240	VP	1	0	P-12
West Lakeside Street (STORM)	AS5157-055	AS5157-003	24	155	VP	0	0	P-13
West Lakeside Street (STORM)	AS5157-003	AS5157-006	24	190	VP	1	0	P-13
Moorland Road	SAS5569-004	SAS5570-001	12	350	RCP	0	0	P-14
Moorland Road	SAS5570-001	MSDMH11-101	12	138	RCP	0	0	P-14
Winnebago Street, Yahara River	SAS5643-004	SAS5543-040	18	364	CI	0	0	P-15



1

2

1	P-15 ADDITION	6/25/2024	EAC
2	P-14 ADDITION	11/9/23	EAC
	REVISION		BY
	DATE		
	Scale:		

14487

CIPP UV LINING REHABILITATION OF SANITARY SEWERS PHASE 2 - 2023 MADISON, WI

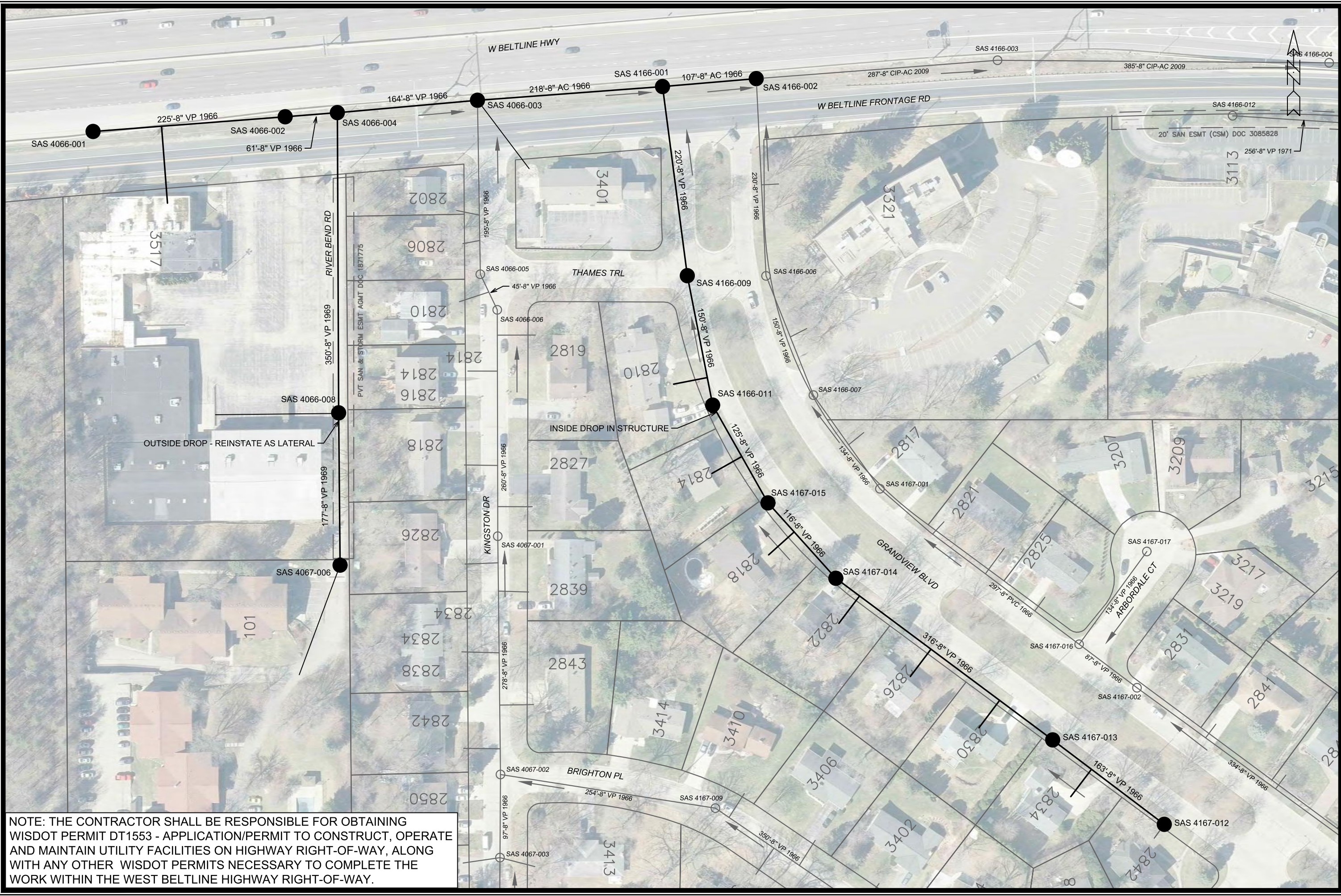
CONTRACT NO: 9335

F:\Encommon\Trenchless\2023 MH2MHPHASE 2\CAD\14487 Plans.dwg



14487

D-2



NOTE: THE CONTRACTOR SHALL BE RESPONSIBLE FOR OBTAINING WISDOT PERMIT DT1553 - APPLICATION/PERMIT TO CONSTRUCT, OPERATE AND MAINTAIN UTILITY FACILITIES ON HIGHWAY RIGHT-OF-WAY, ALONG WITH ANY OTHER WISDOT PERMITS NECESSARY TO COMPLETE THE WORK WITHIN THE WEST BELTLINE HIGHWAY RIGHT-OF-WAY.

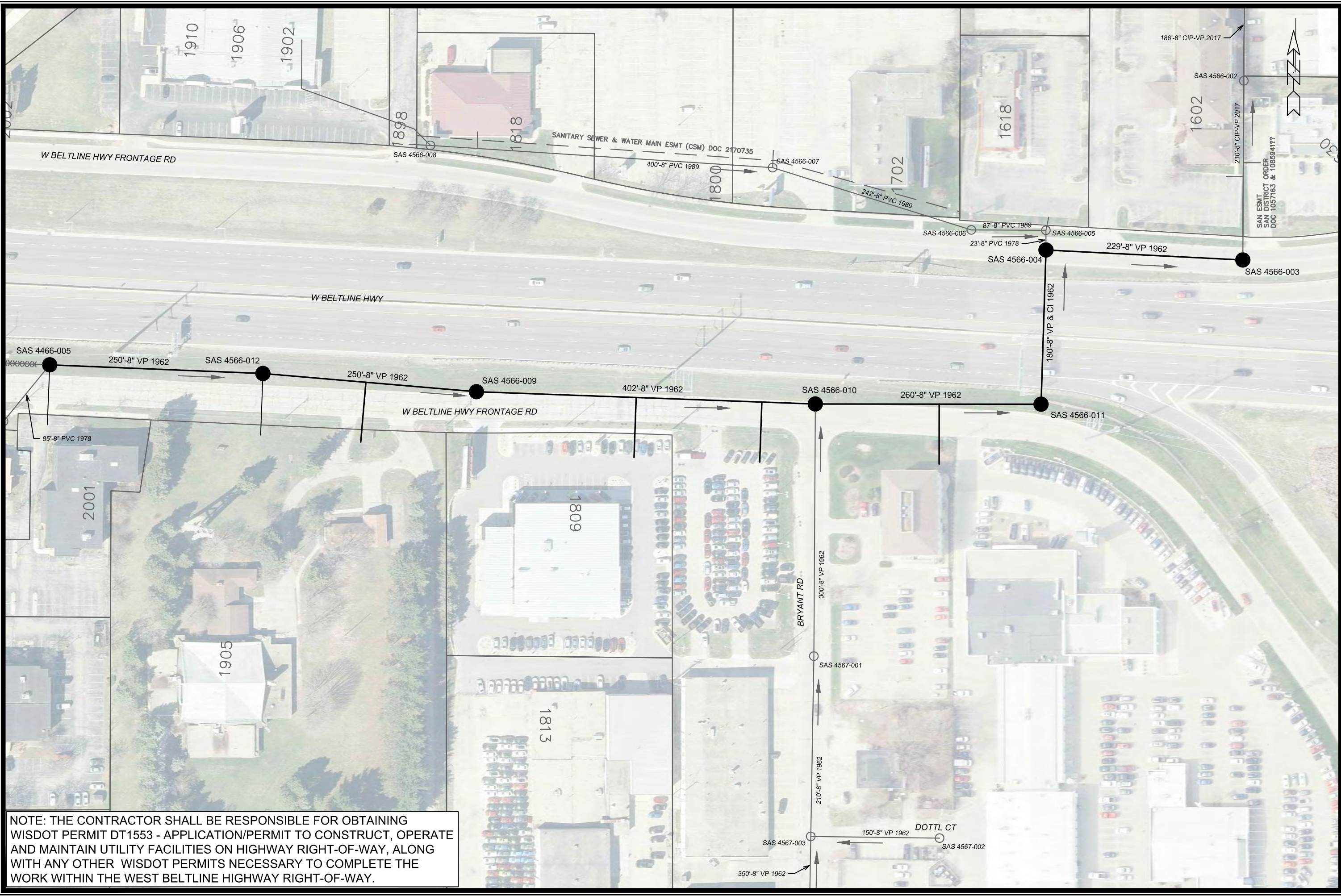
MARK	REVISION	DATE	BY
14487		7/14/2023 11:34 AM	

14487
 MADISON, WI
 CONTRACT NO: 9335

P-1 UTILITY PLAN
 CIPP UV LINING REHABILITATION OF SANITARY SEWERS PHASE 2 - 2023
 F:\Ercommon\Trenchless2023 MH2\PHASE 2\CAD\14487 Plans.dwg



14487
 P-1



NOTE: THE CONTRACTOR SHALL BE RESPONSIBLE FOR OBTAINING WISDOT PERMIT DT1553 - APPLICATION/PERMIT TO CONSTRUCT, OPERATE AND MAINTAIN UTILITY FACILITIES ON HIGHWAY RIGHT-OF-WAY, ALONG WITH ANY OTHER WISDOT PERMITS NECESSARY TO COMPLETE THE WORK WITHIN THE WEST BELTLINE HIGHWAY RIGHT-OF-WAY.

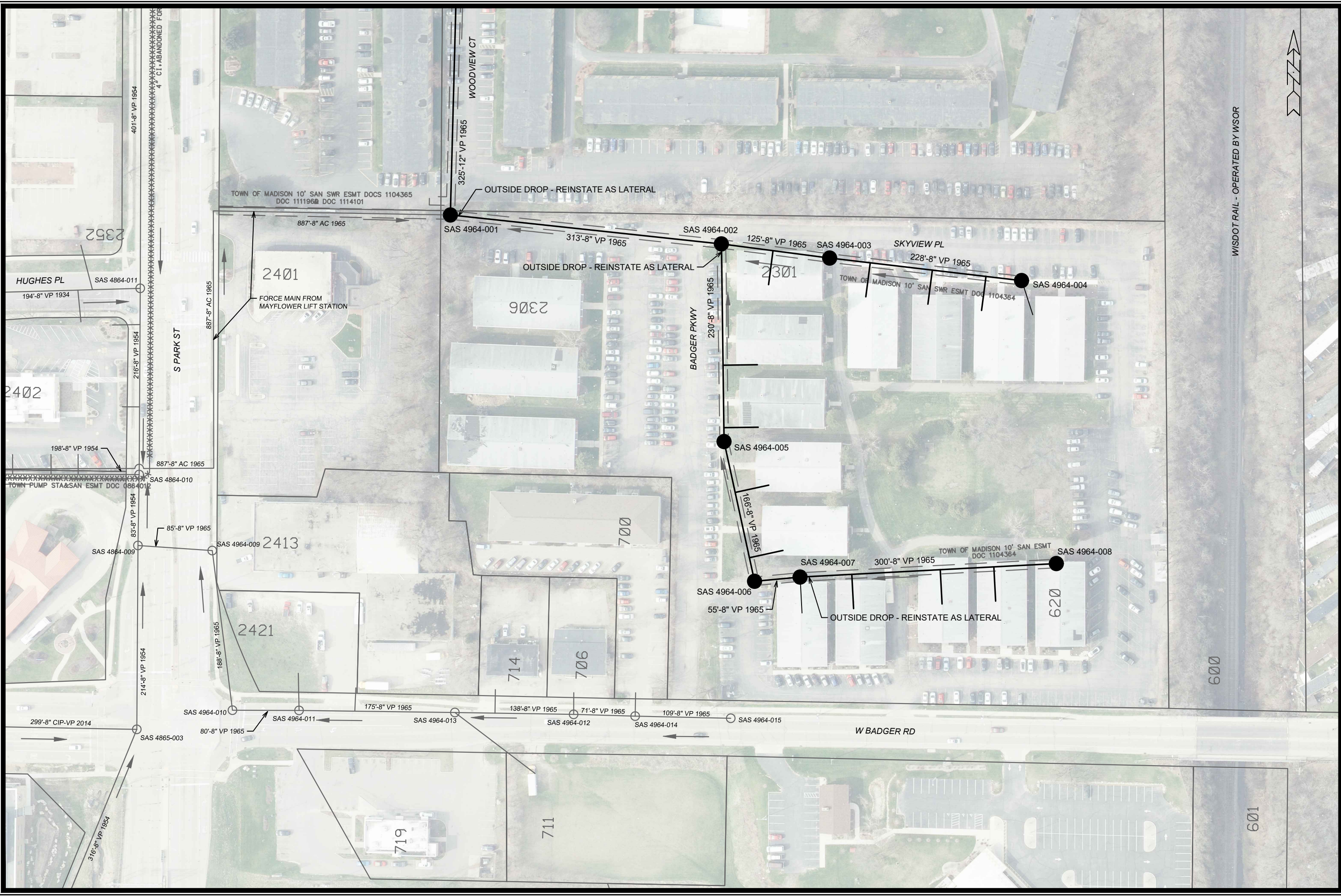
MARK	REVISION	DATE	BY

14487
 MADISON, WI
 CONTRACT NO: 9335

P-2 UTILITY PLAN
 CIPP UV LINING REHABILITATION OF SANITARY SEWERS PHASE 2 - 2023
 F:\Encommon\Trenchless\2023 MH2\PHASE 2\CAD\14487 Plans.dwg



14487
 P-2



WISDOT RAIL - OPERATED BY WSOR



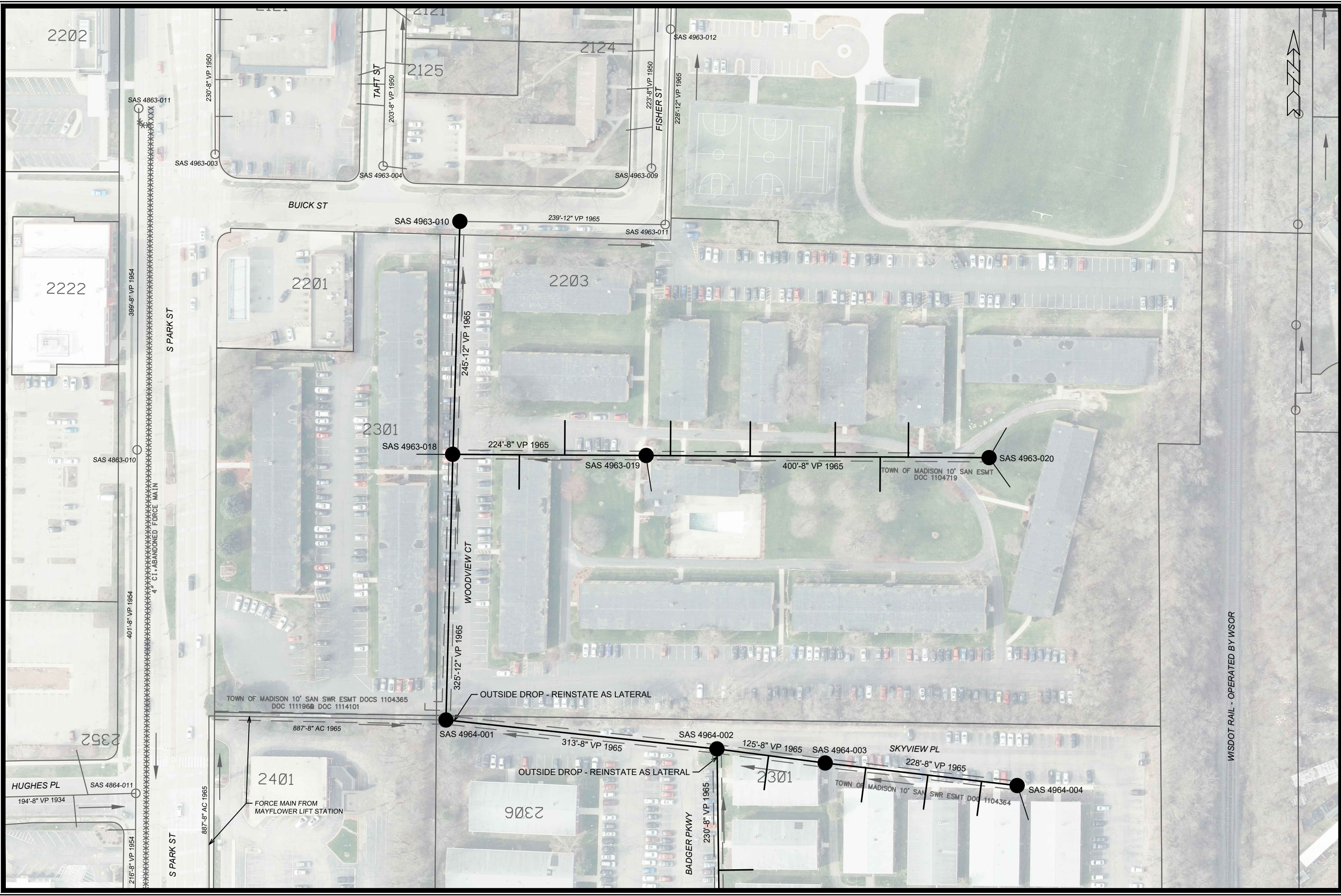
MARK	REVISION	DATE	BY
14487			

14487
 CIPP UV LINING REHABILITATION OF SANITARY SEWERS PHASE 2 - 2023
 MADISON, WI
 CONTRACT NO: 9335

P-3 UTILITY PLAN
 F:\Encommon\Trenchless\2023 MH2\MH1\PHASE 2\CAD\14487 Plans.dwg



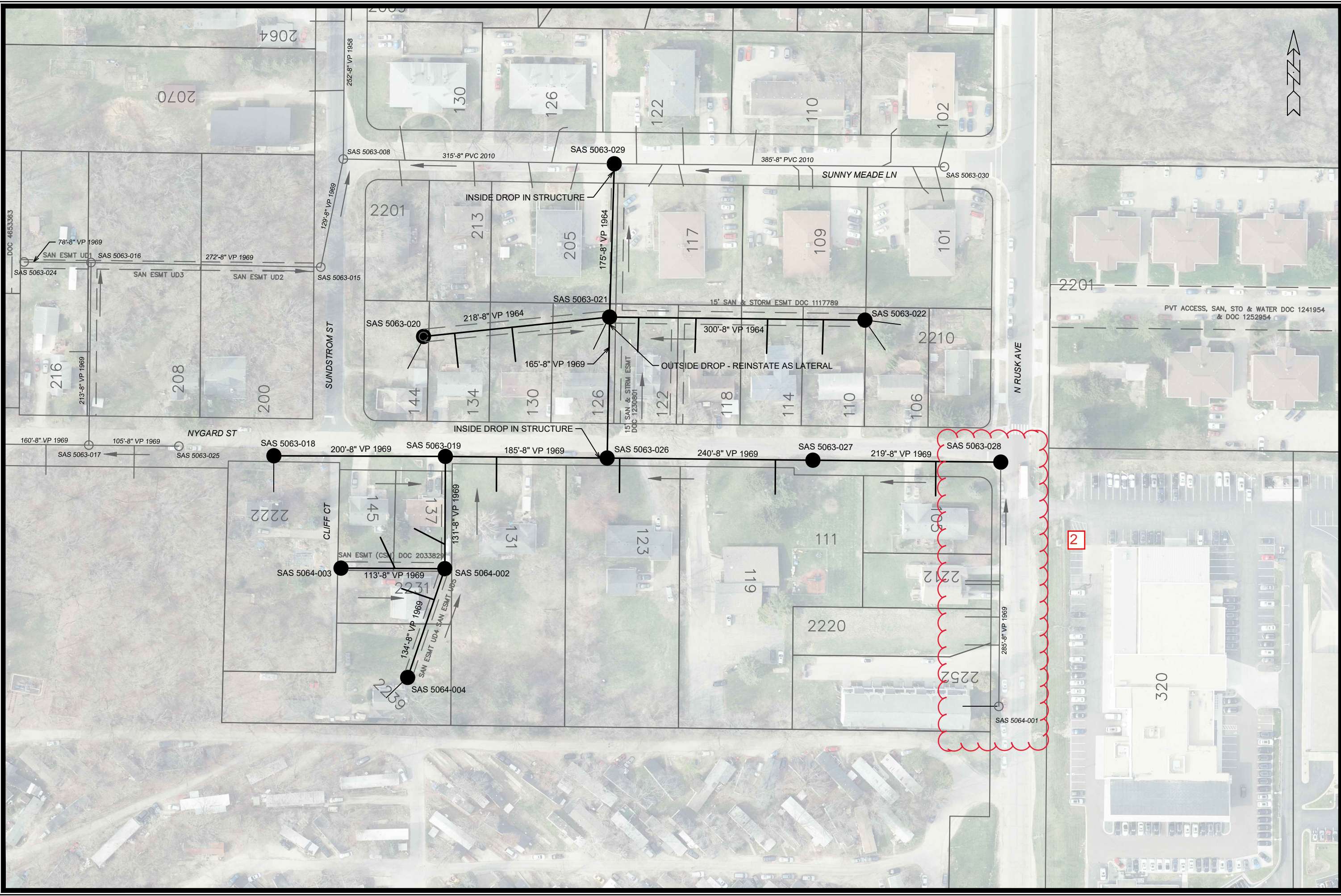
14487
 P-3



P-4 UTILITY PLAN		14487
CIPP UV LINING REHABILITATION OF SANITARY SEWERS PHASE 2 - 2023		MADISON, WI
F:\Encommon\Trenchless\2023 MH2\MH1\PHASE 2\CAD\14487 Plans.dwg		9335
CONTRACT NO:		14487
MARK	REVISION	DATE
Designed By: EAC	Date: 8/8/2023 12:07 PM	Scale: 1" = 100'
BY		P-4



14487
P-4



MARK	REVISION	DATE	BY
2	SAS5063-028 REMOVAL	6/25/24	EAC
Designed By: EAC			Date: 6/25/2024 2:46 PM
Scale: 1" = 100'			P-5

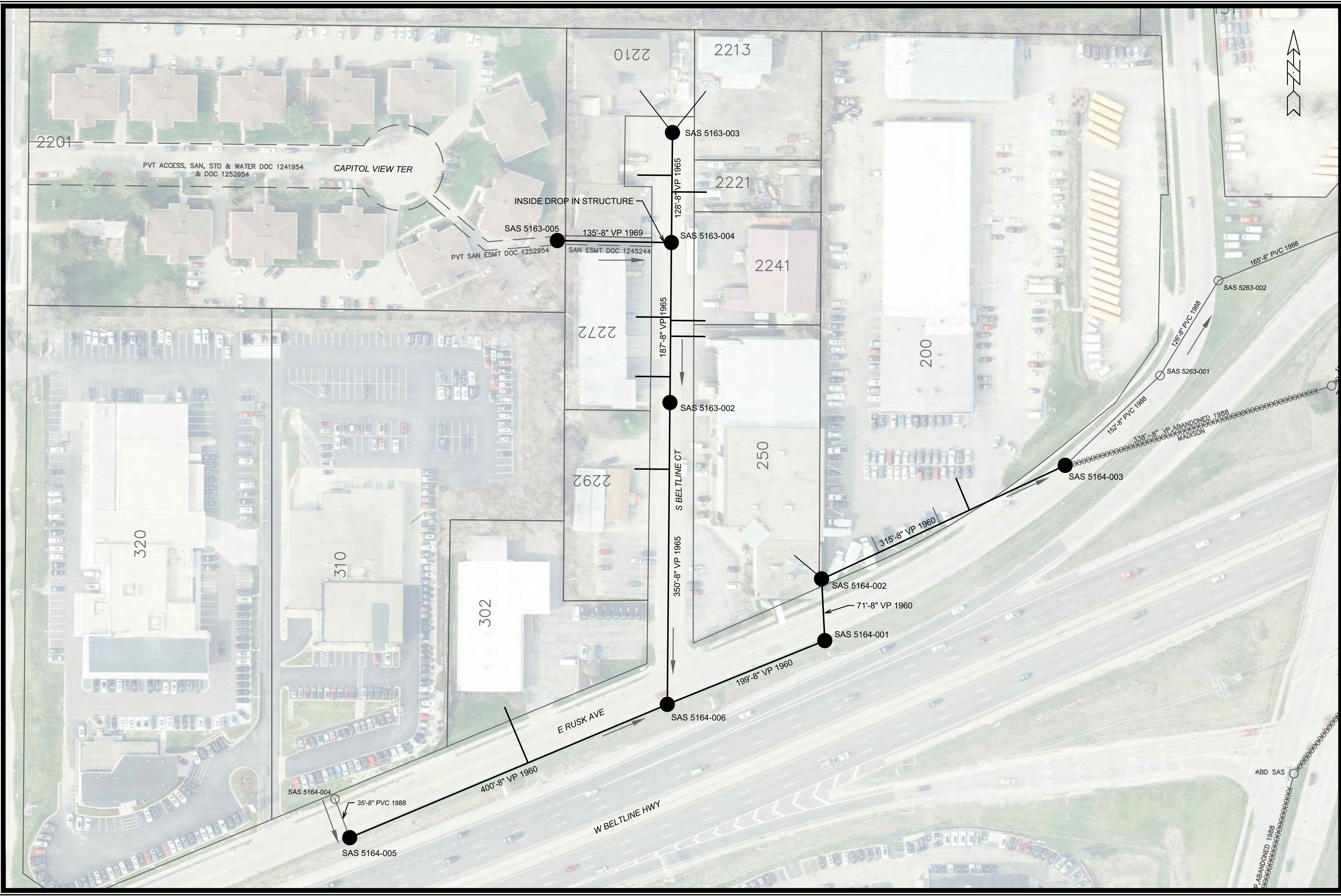
14487
 MADISON, WI
 CONTRACT NO: 9335

P-5 UTILITY PLAN
 CIPP UV LINING REHABILITATION OF SANITARY SEWERS PHASE 2 - 2023
 F:\Encommon\Trenchless\2023 MH2MHPHASE 2\CAD\14487 Plans.dwg



14487
 P-5

2



MARK	REVISION	DATE	BY

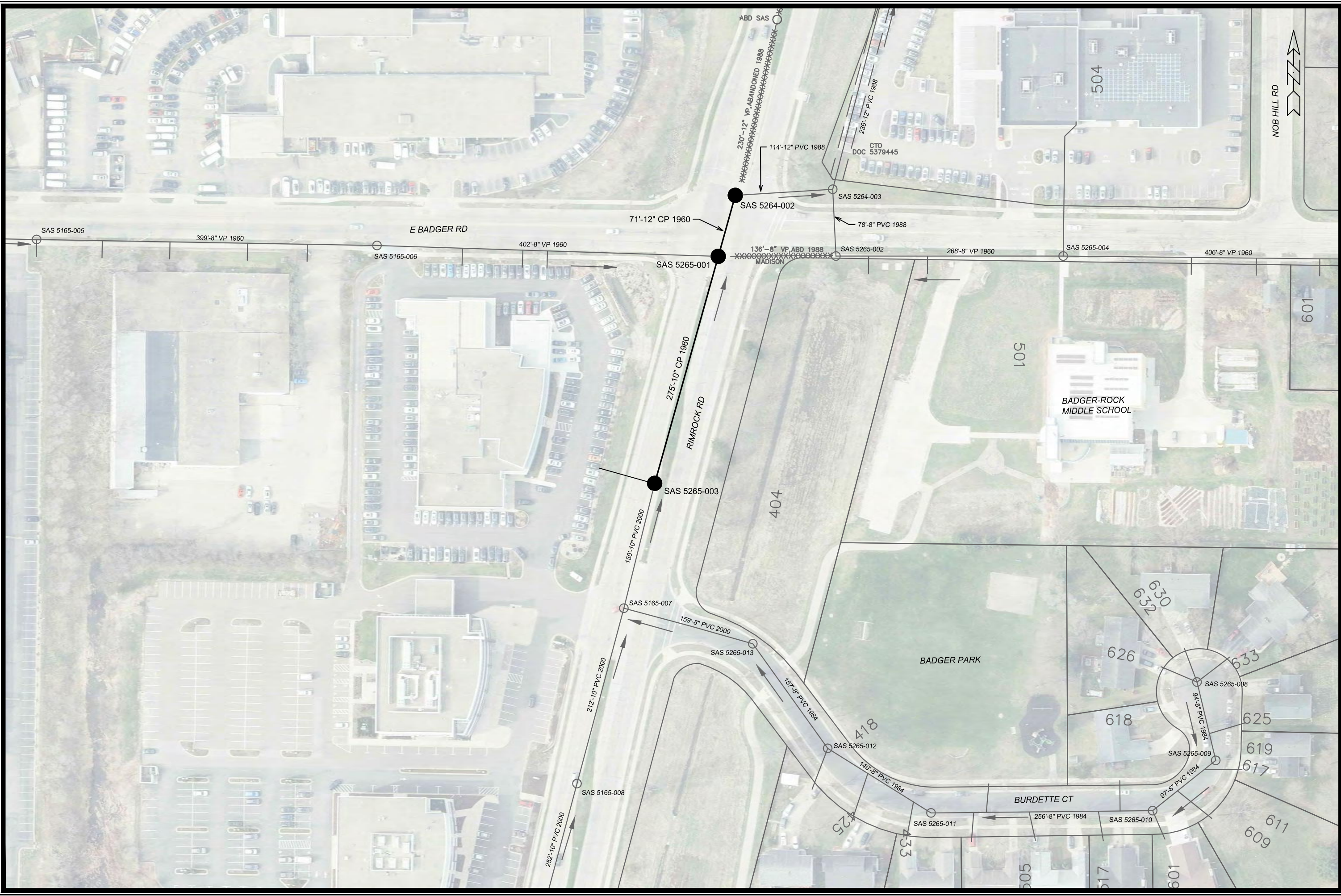
Designed By: EAC Date: 7/14/2023 11:40 AM Scale: 1" = 100'
 14487 P-6

14487
 P-6 UTILITY PLAN
 CIPP UV LINING REHABILITATION OF SANITARY SEWERS PHASE 2 - 2023
 MADISON, WI
 CONTRACT NO: 9335



14487
 P-6

F:\Ercommon\Trenchless\2023 MH2\MH1\PHASE 2\CAD\14487 Plans.dwg



MARK	REVISION	DATE	BY

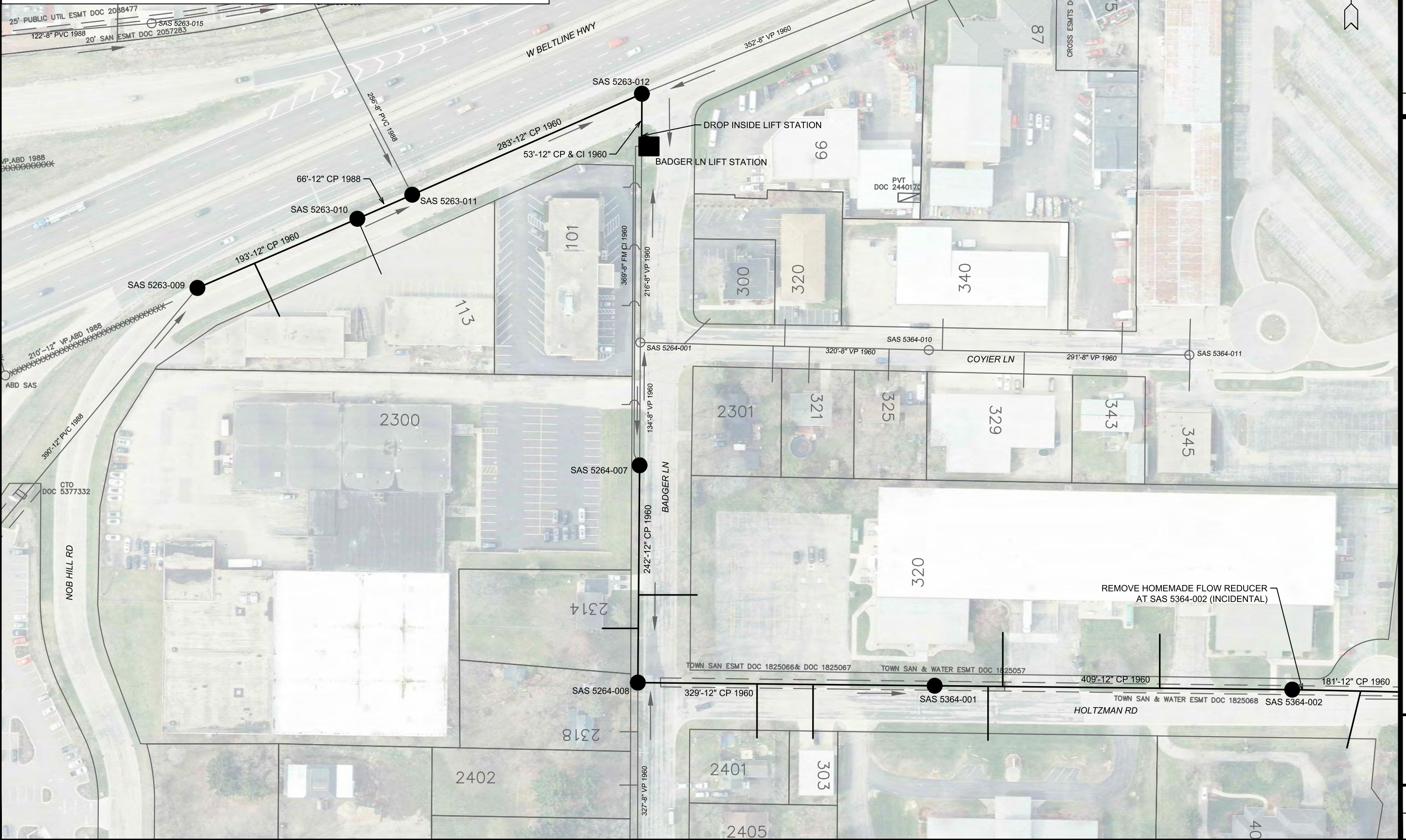
14487
 MADISON, WI
 CONTRACT NO: 9335

P-7 UTILITY PLAN
 CIPP UV LINING REHABILITATION OF SANITARY SEWERS PHASE 2 - 2023
 F:\Ercommon\Trenchless\2023 MH2\MH1\PHASE 2\CAD\14487 Plans.dwg



14487
 P-7

NOTE: THE CONTRACTOR SHALL CONTACT WAYNE BROWN OF CITY OF MADISON OPERATIONS, AT WBROWN@CITYOFMADISON.COM OR 608-266-4087, AND ERIK REHR OF MADISON METROPOLITAN SEWERAGE DISTRICT (MMSD), AT ERIKR@MADSEWER.ORG OR 608-514-3126, 48 HOURS PRIOR TO NEEDING ACCESS TO THE BADGER LANE LIFT STATION AND TO ARRANGE INSPECTION OF INSTALLATION.



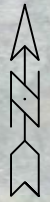
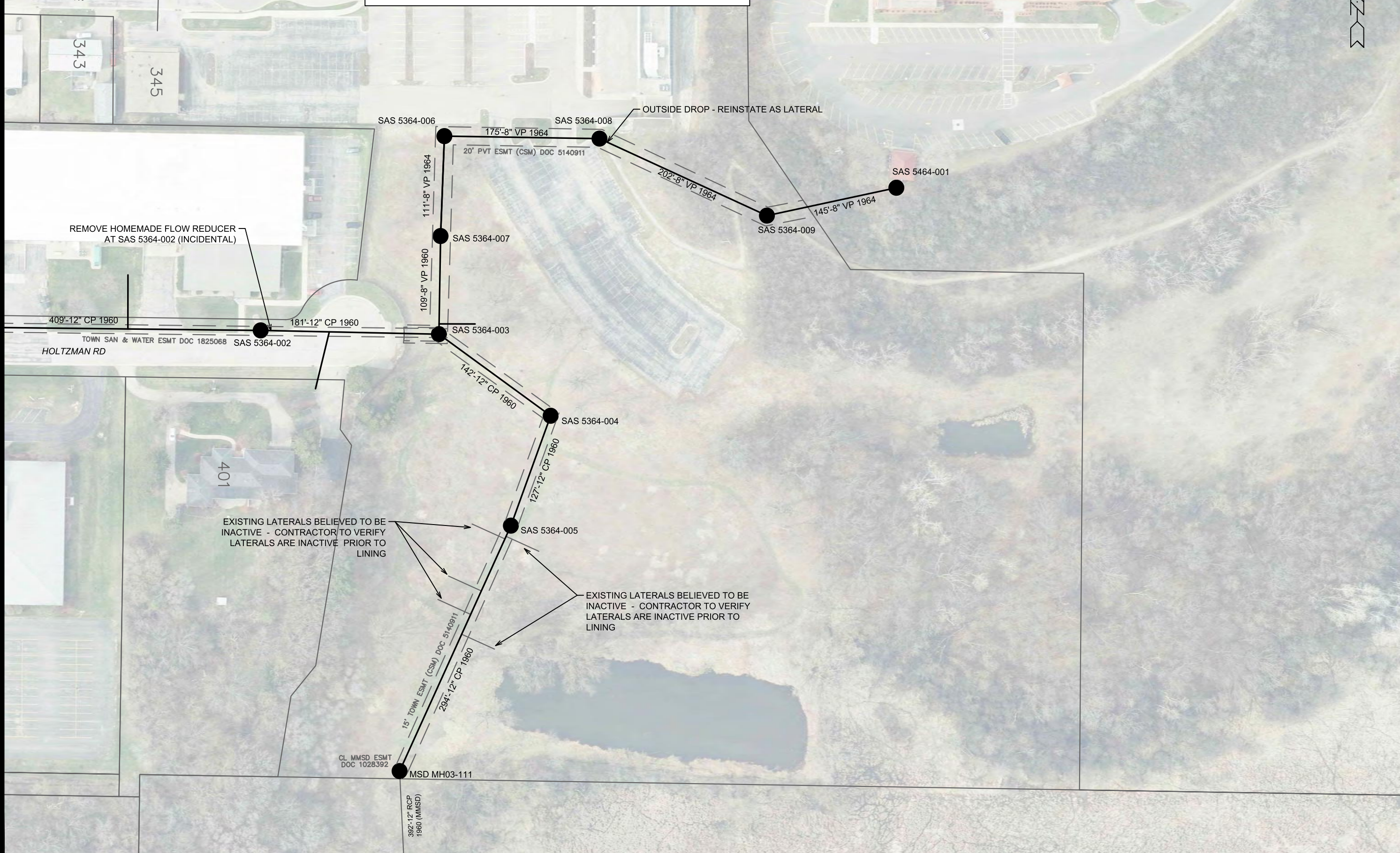
MARK	REVISION	DATE	BY

14487
 MADISON, WI
 CONTRACT NO: 9335
 P-8 UTILITY PLAN
 CIPP UV LINING REHABILITATION OF SANITARY SEWERS PHASE 2 - 2023
 F:\Ercommon\Trenchless\2023 MH2MHPHASE 2\CAD\14487 Plans.dwg

14487
 P-8


NOTE: THE CONTRACTOR SHALL CONTACT THE PROPERTY OWNER OF 33 NOB HILL ROAD TO REQUEST INGRESS AND EGRESS RIGHTS FOR ACCESS TO SAS5464-001.

NOTE: THE CONTRACTOR SHALL CONTACT RAY SCHNEIDER OF MMSD, AT (608) 347-3628 OR RAYS@MADSEWER.ORG, FIVE DAYS PRIOR TO NEEDING ACCESS TO MSD MH03-111 AND TO ARRANGE INSPECTION OF INSTALLATION.

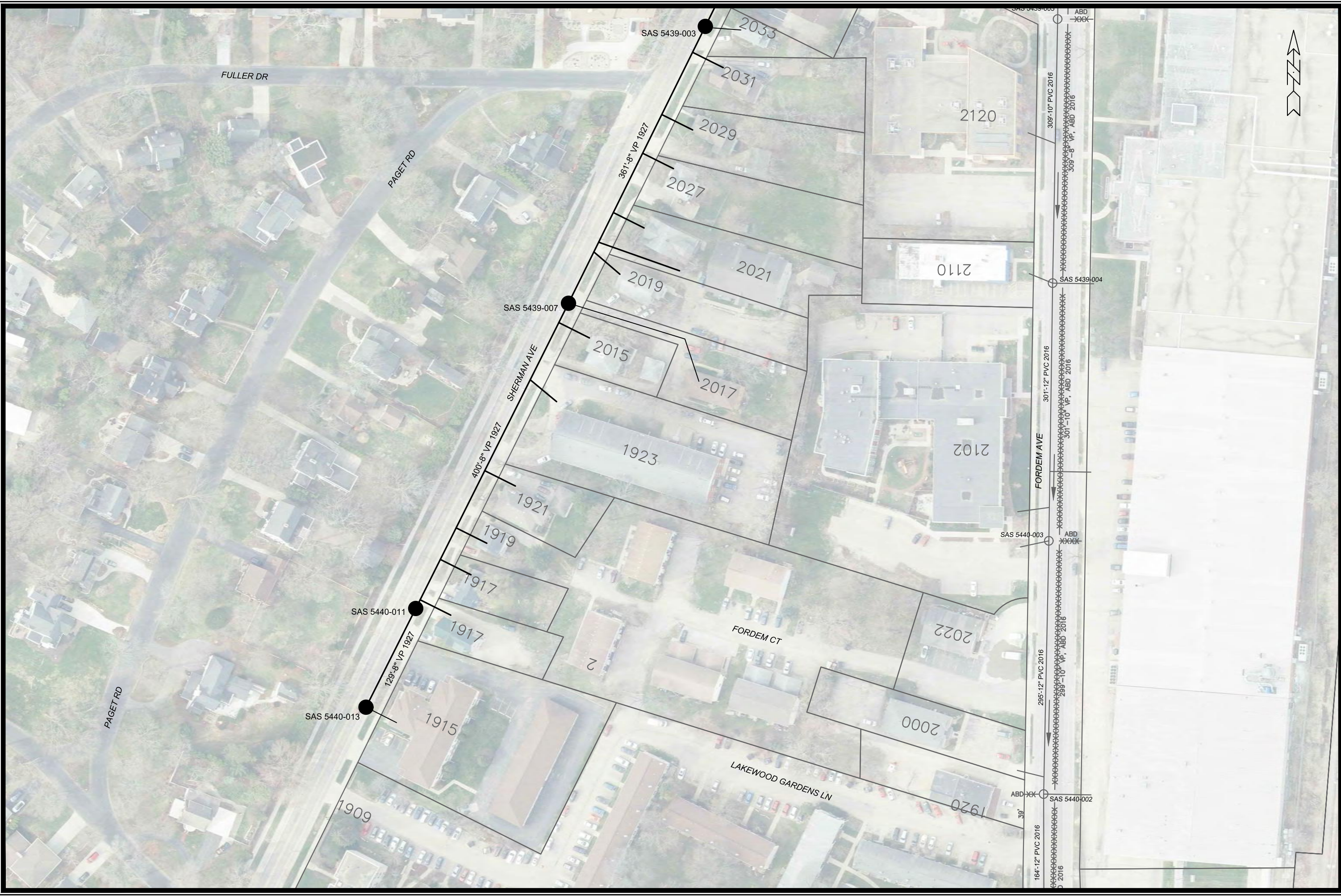


MARK	REVISION	DATE	BY
14487		7/14/2023 11:43 AM	P-9

14487
 UTILITY PLAN
 CIPP UV LINING REHABILITATION OF SANITARY SEWERS PHASE 2 - 2023
 MADISON, WI
 CONTRACT NO: 9335
 F:\Encommon\Trenchless\2023 MH2MHP\PHASE 2\CAD\14487 Plans.dwg



14487
 P-9



MARK	REVISION	DATE	BY

14487
 MADISON, WI

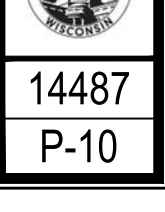
CONTRACT NO: 9335

14487

P-10

14487

P-10



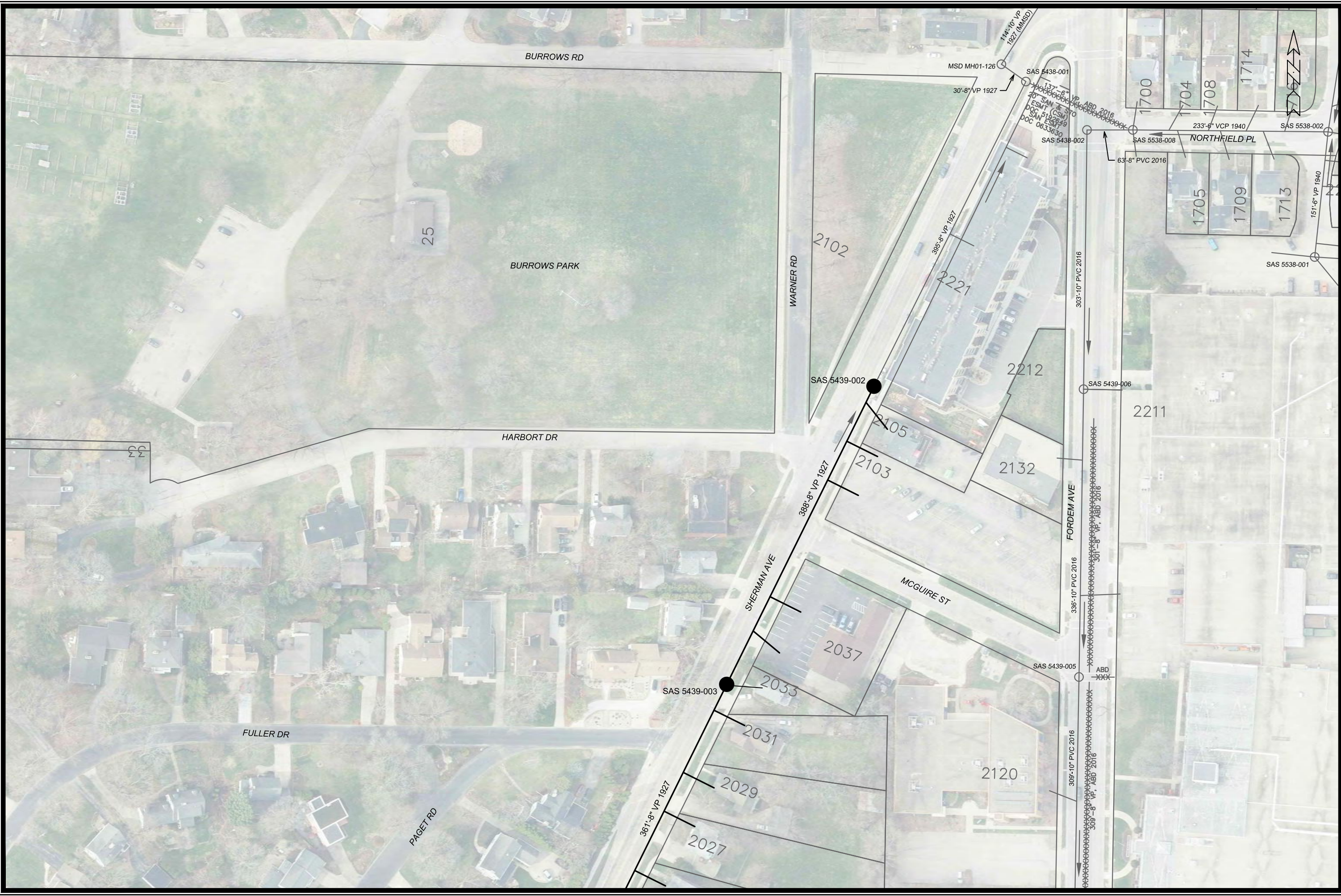
F:\Encommon\Trenchless\2023 MH2MHPHASE 2\CAD\14487 Plans.dwg

7/14/2023 11:44 AM

Scale: 1" = 100'

Designed By: EAC

14487



MARK	REVISION	DATE	BY

14487
 MADISON, WI
 CONTRACT NO: 9335

P-11 UTILITY PLAN
 CIPP UV LINING REHABILITATION OF SANITARY SEWERS PHASE 2 - 2023
 F:\Encommon\Trenchless\2023 MH2MHPHASE 2\CAD\14487 Plans.dwg



14487
 P-11



MARK	REVISION	DATE	BY

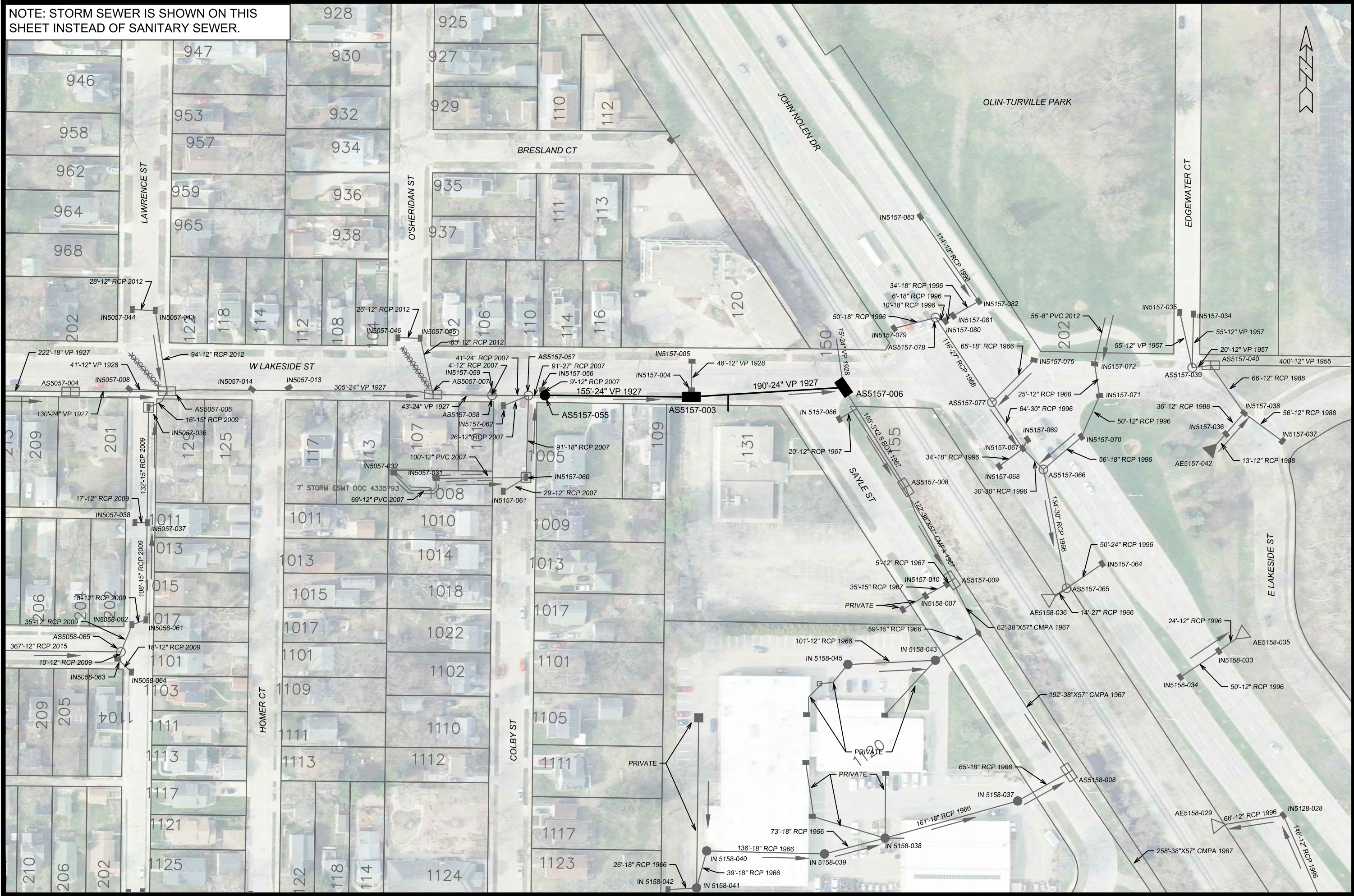
14487
 MADISON, WI
 CONTRACT NO: 9335

P-12 UTILITY PLAN
 CIPP UV LINING REHABILITATION OF SANITARY SEWERS PHASE 2 - 2023
 F:\Encommon\Trenchless\2023 MH2\MH1PHASE 2\CAD\14487 Plans.dwg



14487
 P-12

NOTE: STORM SEWER IS SHOWN ON THIS SHEET INSTEAD OF SANITARY SEWER.



MARK	REVISION	DATE	BY
14487		7/14/2023 11:48 AM	P-13

14487
 MADISON, WI
 CONTRACT NO: 9335

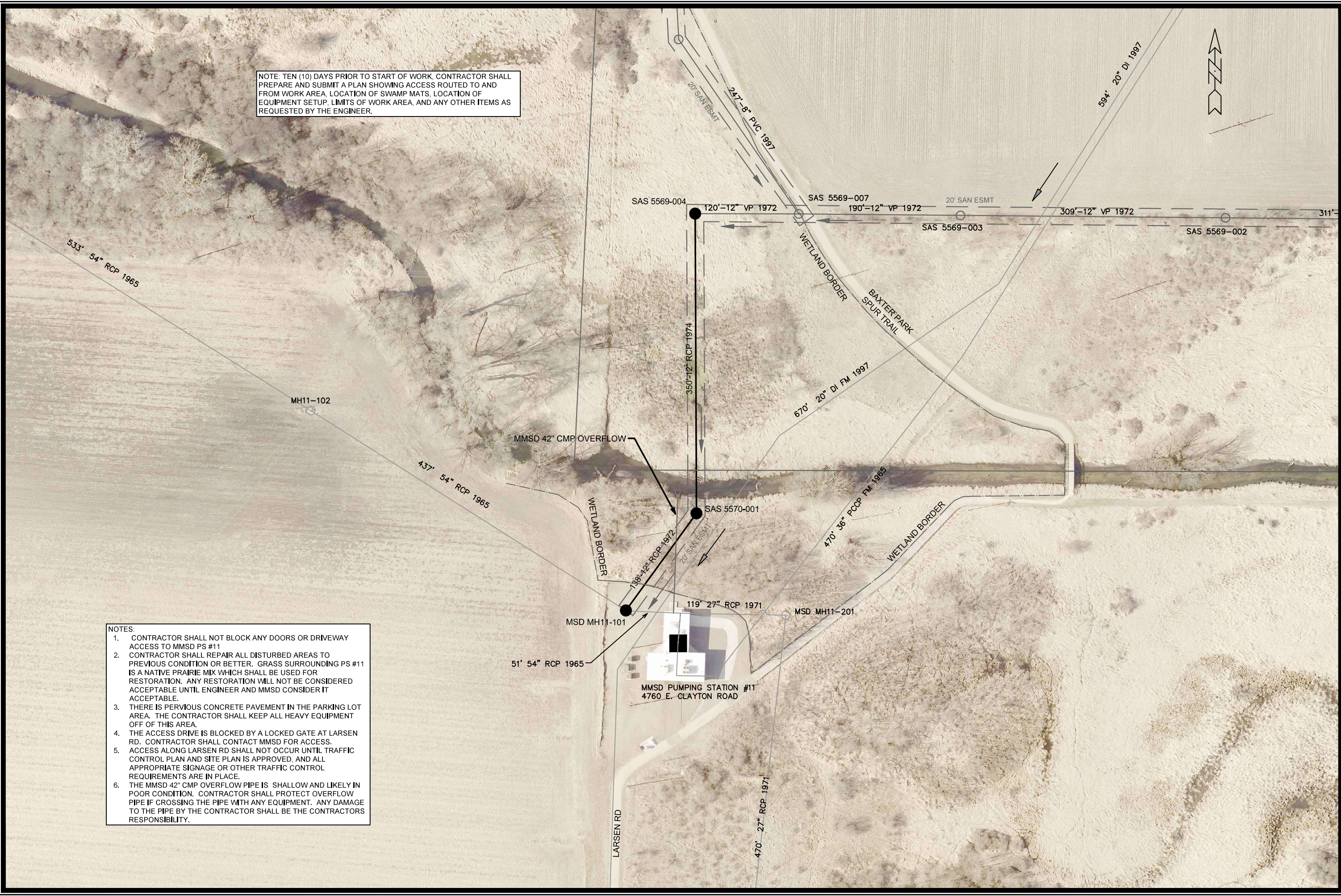
P-13 UTILITY PLAN (STORM)
 CIPP UV LINING REHABILITATION OF SANITARY SEWERS PHASE 2 - 2023
 F:\Ercommon\Trenchless2023\MH2\MH1PHASE 2\CAD\14487 Plans.dwg



14487
 P-13

NOTE: TEN (10) DAYS PRIOR TO START OF WORK, CONTRACTOR SHALL PREPARE AND SUBMIT A PLAN SHOWING ACCESS ROUTED TO AND FROM WORK AREA, LOCATION OF SWAMP MATS, LOCATION OF EQUIPMENT SETUP, LIMITS OF WORK AREA, AND ANY OTHER ITEMS AS REQUESTED BY THE ENGINEER.

- NOTES:
1. CONTRACTOR SHALL NOT BLOCK ANY DOORS OR DRIVEWAY ACCESS TO MMSD PS #11
 2. CONTRACTOR SHALL REPAIR ALL DISTURBED AREAS TO PREVIOUS CONDITION OR BETTER. GRASS SURROUNDING PS #11 IS A NATIVE PRAIRIE MIX WHICH SHALL BE USED FOR RESTORATION. ANY RESTORATION WILL NOT BE CONSIDERED ACCEPTABLE UNTIL ENGINEER AND MMSD CONSIDER IT ACCEPTABLE.
 3. THERE IS PERVIOUS CONCRETE PAVEMENT IN THE PARKING LOT AREA. THE CONTRACTOR SHALL KEEP ALL HEAVY EQUIPMENT OFF OF THIS AREA.
 4. THE ACCESS DRIVE IS BLOCKED BY A LOCKED GATE AT LARSEN RD. CONTRACTOR SHALL CONTACT MMSD FOR ACCESS. ACCESS ALONG LARSEN RD SHALL NOT OCCUR UNTIL TRAFFIC CONTROL PLAN AND SITE PLAN IS APPROVED, AND ALL APPROPRIATE SIGNAGE OR OTHER TRAFFIC CONTROL REQUIREMENTS ARE IN PLACE.
 5. THE MMSD 42" CMP OVERFLOW PIPE IS SHALLOW AND LIKELY IN POOR CONDITION. CONTRACTOR SHALL PROTECT OVERFLOW PIPE IF CROSSING THE PIPE WITH ANY EQUIPMENT. ANY DAMAGE TO THE PIPE BY THE CONTRACTOR SHALL BE THE CONTRACTORS RESPONSIBILITY.



MARK	REVISION	DATE	BY
1	P-14 ADDITION	11/9/23	EAC
Designed By: EAC			Date: 11/9/2023 9:31 AM
Scale: NTS			P-14

14487
 UTILITY PLAN
 CIPP UV LINING REHABILITATION OF SANITARY SEWERS PHASE 2 - 2023
 MADISON, WI
 CONTRACT NO: 9335
 F:\Encommon\Trenchless\2023 MH2\MH1\PHASE 2\CAD\14487_P-14.dwg



14487
 P-14

NOTE: SEWER MAIN DENOTED ON THIS SHEET TO BE CIPP LINED USING THERMAL CURE METHOD (HOT WATER)

** DENOTES SANITARY MAIN CIPP-UV LINED AS PART OF 2021 -REBID LINING PROJECT (CONTRACT 9262)



MARK	REVISION	DATE	BY
2	P-15 ADDITION	6/25/24	EAC

Scale: #####
 Designed By: ##
 Date: 6/25/2024 10:32 AM
 14487
 P-15

14487
 P-15 UTILITY PLAN
 CIPP UV LINING REHABILITATION OF SANITARY SEWERS PHASE 2 - 2023
 MADISON, WI
 CONTRACT NO: 9335
 F:\Ercommon\Trenchless\2023 MH2\MH1PHASE 2\CAD\14487_P-15.dwg

14487
 P-15